

Welcome to Year One

Staff:

1P – Orlagh Creamer (Year Team Leader)

1B– Dexter Bush

1O- Toshiko Lisle

1R- Chloe Collins

Support Staff:

Ayse Batuhan - Year team TA

Judith Adams - Year team TA Tuesday - Friday

Louise Mattocks - Year team TA Monday

Trina Hatchett - SEN support Mon/Tues/Wed PM

Davorka Andjelic - TA first half of Autumn term

Bob Houghton - TA first half of Autumn term

Rika Manabe- TA Monday and Tuesdays after Autumn 1

Trina Hatchett is the interventions TA Mon- Wednesday.

Sarah Crawford will be teaching Art to Year 1, Jason Bichri will be teaching computing and Mario Vitrano will teach one session of PE every two weeks.

Structure of the day



- **Doors open 8.45**
- **Register 8.50**
- **Mornings** are usually Maths, English and Phonics focused.
- 10.00am – Fruit time
- 10.35am – Play Time
- 12.10 – 1.10pm Lunch time
- **Afternoons:** Science/History/Geography/PE/Music/Religion and World views/PSHE/Design and Technology/Whole class and guided reading and some Choosing.
- **End of the day – 3.20pm.** Please collect your child from the classroom. Children will be brought to the office for collection after 3.30
- We have a 2 week timetable, but information about learning will be posted on ParentHub (more info on this later).

Attendance

Daily attendance at school is vital for your child to achieve their full potential.

Missed days of school, and lateness, can really add up over the course of year and negatively impact your child's learning.

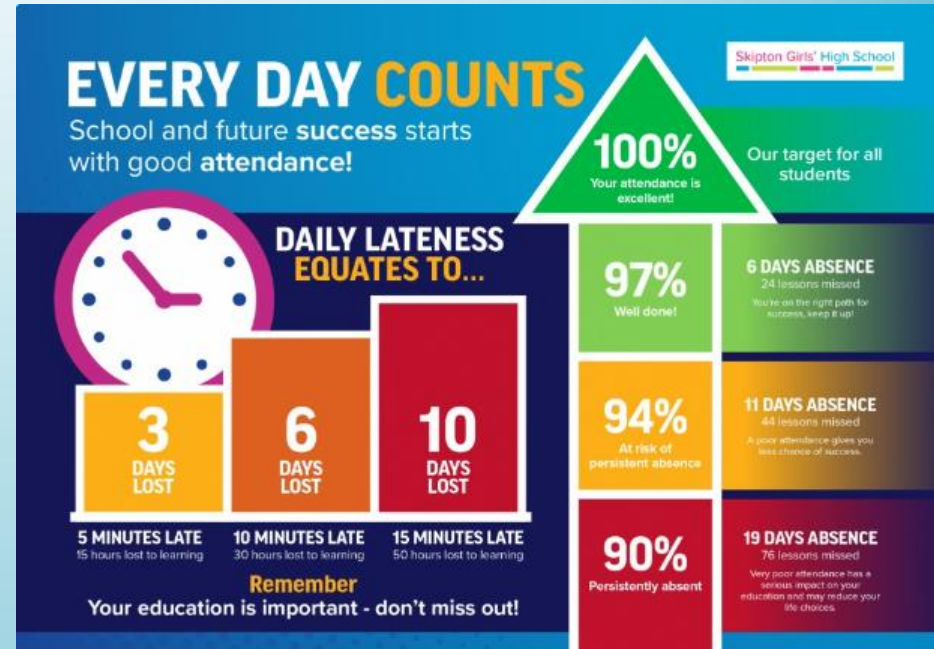
Coming in even a few minutes late can be very unsettling for a child, and means they might miss the start of a lesson.

Permission for absence will only be granted for:

- Illness
- Medical appointments
- Religious holidays
- Exceptional circumstances

Children can still attend school with minor coughs & colds.

The **NHS** have a website page called '**Is my child too ill for school**' which outlines if you should send your child to school or not.



Attendance

Nationally, there is an 'attendance crisis' in schools. School attendance is significantly lower than pre-pandemic levels.

There is a major drive from the Government to tackle poor attendance. This includes new attendance guidelines for all schools.

If the school are concerned about your child's level of attendance, a member of the school **Senior Leadership Team** will contact you to talk about this and work with you to try and improve your child's attendance.

"School absence is at crisis levels, wreaking havoc on children's education and future life chances. Persistent absence remains eye-wateringly high, up 60 per cent on pre-pandemic levels, with one in five children persistently absent. 29 Feb 2024

 The Centre for Social Justice
<https://www.centreforsocialjustice.org.uk> · CSJ

Call for Immediate Action on School Absence Crisis

 The Guardian

Ofsted reforms to focus on inclusion, behaviour and attendance

Far-reaching reforms aim to support most vulnerable children and 'recognise growing challenges facing education'



 GOV.UK

Major national drive to improve school attendance

Attendance hubs to more than double to support 1000 more schools and £15 million investment to expand the attendance mentor pilot programme.

8 Jan 2024



Curriculum coverage

Subject	Autumn 1	Autumn2	Spring 1	Spring 2	Summer 1	Summer 2
History and Geography	A Child through Time (History)	Our World (Geography)	Knights and Castles (History)	Rainforests (Geography)	People from the Past (History)	Oceans, Seas and Rivers (Geography)
Science (Seasonal Changes will be taught throughout the year.	Animals including humans	Animals including humans	Everyday materials	Everyday materials	Plants	Plants

You will find curriculum maps for English, Maths and all other subjects on the school website.

Please see the **weekly overview**, which will be posted on ParentHub every Friday afternoon, to show specific objectives that we are covering each week in maths and English, as well as other subjects. There will also be details of any dates for your diaries or reminders for parents.

PE

- The children have two PE sessions each week, but the days vary on a fortnightly basis.
- **1B** – **Week 1** – Monday/Tuesday **Week 2**- Tuesday/Friday
- **1O** – **Week 1** – Wednesday/Friday **Week 2**- Monday/Wednesday
- **1P** – **Week 1** - Wednesday/Friday **Week 2**- Monday/Thursday
- **1R** – **Week 1** – Tuesday/Wednesday **Week 2**- Thursday/Friday
- Children must come into school in PE appropriate clothes (leggings/shorts/tracksuit bottoms and trainers). Hair is also expected to be tied up.



Reading



- Their reading day is displayed on the classroom windows.
- Children should bring their book bag and reading diaries into school when it is their reading day so that we can give out new reading books.
- They will take home 2 banded reading books (one being a **Reading Practice** book and the other **Read Along With Me** book) and 1 book of their choice to share with a grown up and foster a love of reading.
- We also do whole class reading sessions where we read a story and do a linked activity and children will also be taking part in weekly guided reading sessions with their teacher.
- In guided reading sessions, children will read and discuss a text together. These sessions not only develop children's fluency and decoding skills, but also provide a more natural context for the learning of comprehension and inference skills.
- Each child will be given new reading diaries on their book change days this week and early next.



Reading at home



Reading is arguably the most important learning this year. We encourage as much reading as possible to take place at home so that children develop a love of reading.

We would advise listening to your child read the banded books aloud for at least 10 minutes every day.

It is also really important to still read other stories to your child and to share books of their choosing. This will help with vocabulary and imagination.

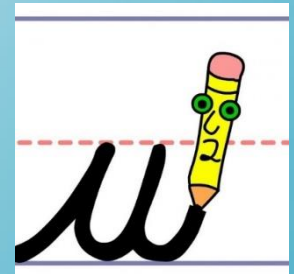
Inside reading diaries you will find the tricky words and sounds we are learning this year. We will **highlight** the sounds and tricky words in the diary when your child is secure.

Phonics



Phonics is taught daily and the children also work in small groups with the Teacher or TA on letters/sounds/words that are appropriate for their level. You will find all the sounds and tricky words that we are learning in class on the weekly overview each week. We encourage you to play phonics games at home and practise the sounds that we have been learning.

Handwriting



Handwriting lessons are taught regularly in whole class sessions. This year, we are focusing on writing in print using lower case letters, with capital letters at the beginning of sentences and for proper nouns.



Writing



- Children take part in regular writing activities. These will be a range of free choice opportunities, directed independent activities and those working along side the adults.
- We teach both fiction and non-fiction writing throughout the year, as well as poetry.
- Throughout the year, our focus is on writing in lower case letters, leaving finger spaces between words, starting each sentence with a capital letter and ending each sentence with a full stop. Next year in Year 2, there is a significant leap in expectation so it is crucial the children master the basics this year.

Maths



- Children will follow a Maths mastery curriculum.
- They follow longer units of work, sometimes lasting 4 or 5 weeks.
- This is to ensure children develop a deep understanding of the Maths, and have firm foundations in place as they move through the school.

Year 1 Maths Curriculum Map												
	Wk 1	Wk 2	Wk 3	Wk 4	Wk 5	Wk 6	Wk 1	Wk 2	Wk 3	Wk 4	Wk 5	Wk 6
Autumn	Numbers 1-10		Addition and Subtraction within 10				Shape		Numbers 11-20			
Spring	Numbers 11-20		Addition and Subtraction within 20			Numbers to 50			Length and Height Weight and Volume			
Summer	Multiplication and Division			Fractions	Position and Direction	Numbers to 100			Money		Time	

Maths



- Children are taught as a whole class, with short back and forth activities.
- We don't make any assumptions about how children will fare with an activity and they all have access to the same task. However, differentiation does still occur.
- We provide support for any child who might need it, and all children have access to additional challenges to allow application of their learning.
- Huge emphasis is placed on developing the children's reasoning and mathematical thinking skills, as well as their ability to explain their answer.

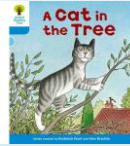
Assessment

- We assess the children's understanding in every lesson and make notes on how they manage an activity and whether or not they have met the learning objective.
- Throughout the year teachers will complete an individual assessment profile and will be able to keep you updated on their progress and inform you of any areas that your child may need to practise.
- At the end of the year you will be informed whether your child is working towards, within, or above the national average in each subject.
- Reading is continually assessed in Year 1 and we have very clear and precise guidelines on how to do so. There is often a temptation to ask to move your child up a reading level, but there will be a valid reason why this is not happening. We ask you to trust our process and professional judgements as we are ensuring your child has a secure foundation. If your child is ready for the next stage, it will be picked up on quickly and adjustments will be made.

Learning at home

Compulsory

- **Reading** – regularly hearing your child read at home (for a minimum of 10minutes every day).
- **Spellings** – helping your child learn the weekly spellings that are sent home by the school. We start sending spellings home later on in the year, but this is done in a very informal way on white boards with no recording of scores. It is a stepping stone towards the routine testing that they will experience in older year groups.

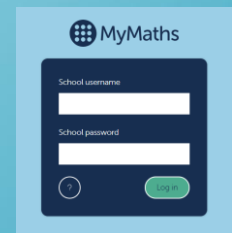
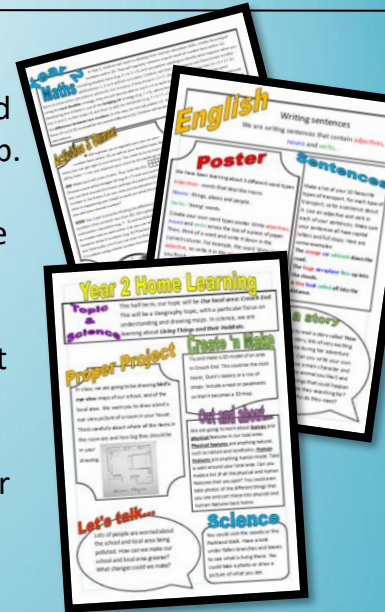


We still require children to rehearse these spellings at home so they can apply them to their writing in school.

Look, cover, write, check
head
ready
bread
many
again

Optional

- Each half term, **Home Learning** is posted on the school website and on ParentHub.
- Although Home Learning is **optional**, we strongly encourage your child to complete some of the activities to reinforce the message that learning isn't just confined to the classroom.
- There are Home Learning documents for Maths, English & Wider Curriculum subjects.
- There is a wide range of activities – some are creative whereas others practise skills learnt in class.
- Maths activities are posted on **MyMaths**. You will be provided with login details in the coming weeks. We will also provide a **Numbots** login. Your child may need support with some of the activities on **MyMaths**. If you think an activity is too hard, it is fine to leave it and possibly look at it again in a few months.



*If you would like to know why some of our learning at home is optional, there is a **rationale** on our website, in the Home Learning section.*

Behaviour

There are 5 core values which underpin our behaviour policy.
We will teach, provide meaningful opportunities for and expect our children to be:

Caring

Creative

Resilient

Inclusive

Aspiring



Behaviour

Rewards

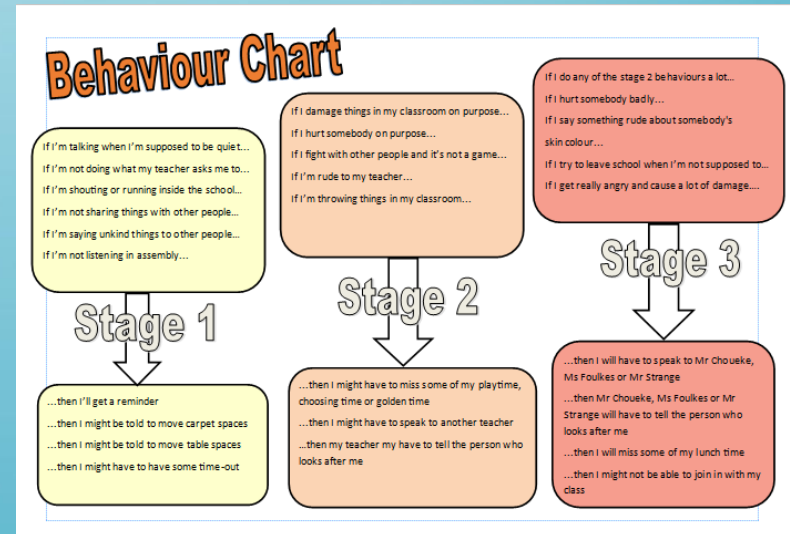
- Warm and Fuzzies
- Golden Books
- Marbles – golden time
- Lots of praise!

Sanctions

We practice restorative behaviour that resolves difficulties and repairs harm. Sanctions for unacceptable behaviour will be set according to this chart which is on the website and in every classroom.

Well-being

- Emotional regulation support using Zones of Regulation.
- Provide Calm Corners in middle areas.
- Connection or worry box in classrooms.

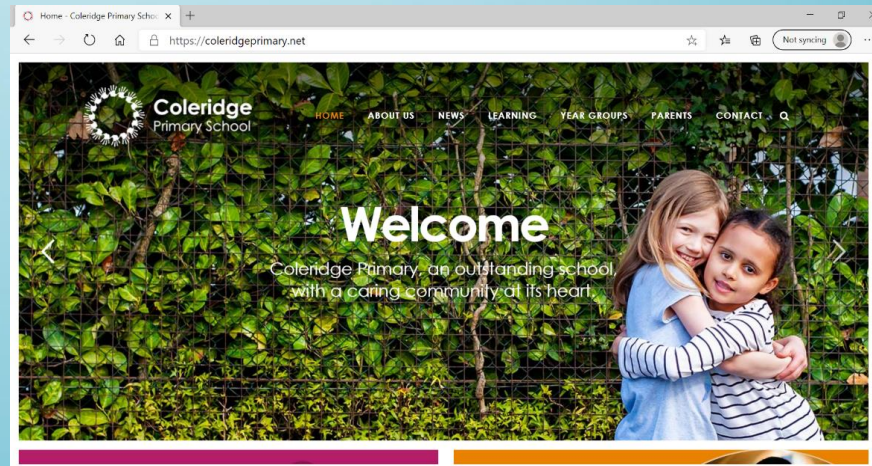


Website and ParentHub:

Website

Please remember to check the website regularly as we try to put as much relevant information on it, including:

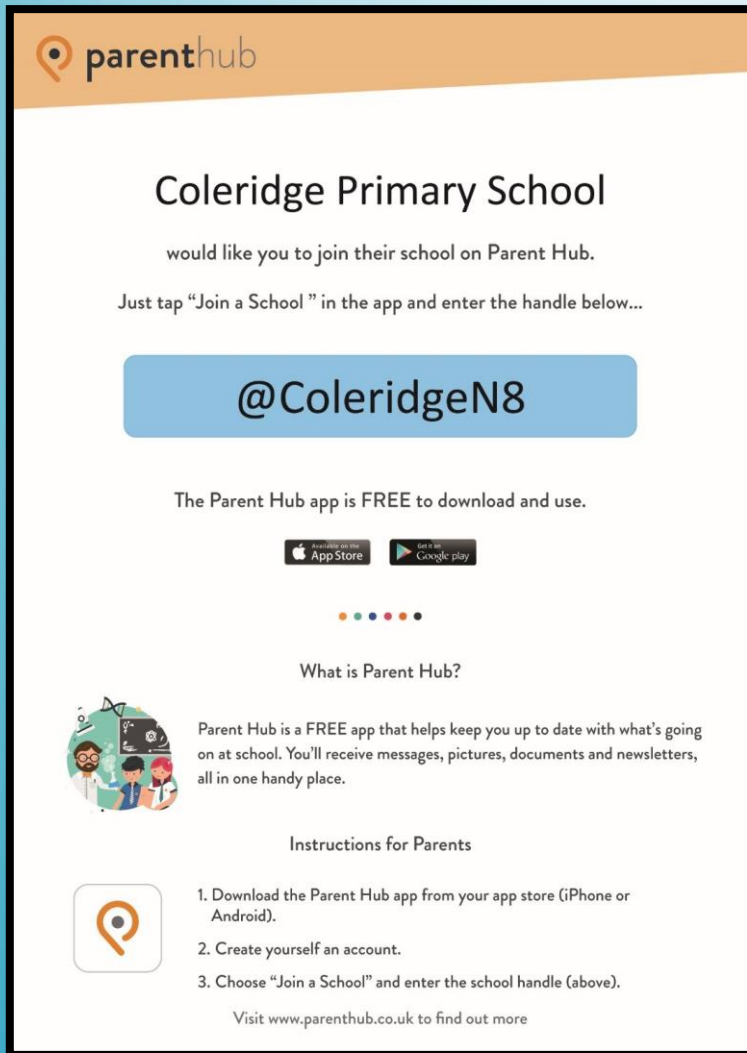
- Curriculum information and policies
- Class timetables
- Home Learning
- Newsletters
- Lunch menus



Parenthub

- Weekly overview every Friday
- Main channel of communication

Website and ParentHub:



The screenshot shows the ParentHub website interface for Coleridge Primary School. At the top left is the ParentHub logo. The main heading is "Coleridge Primary School" followed by the text "would like you to join their school on Parent Hub." Below this, it says "Just tap 'Join a School' in the app and enter the handle below...". A large blue button contains the handle "@ColeridgeN8". Underneath, it states "The Parent Hub app is FREE to download and use." and provides links to the App Store and Google Play. A section titled "What is Parent Hub?" features an illustration of children and text explaining the app's benefits. Another section titled "Instructions for Parents" lists three steps: downloading the app, creating an account, and joining the school. At the bottom, it provides the website URL: "Visit www.parenthub.co.uk to find out more".

parenthub

Coleridge Primary School

would like you to join their school on Parent Hub.

Just tap "Join a School" in the app and enter the handle below...

@ColeridgeN8

The Parent Hub app is FREE to download and use.

Available on the App Store | Get it on Google play

What is Parent Hub?

Parent Hub is a FREE app that helps keep you up to date with what's going on at school. You'll receive messages, pictures, documents and newsletters, all in one handy place.

Instructions for Parents

1. Download the Parent Hub app from your app store (iPhone or Android).
2. Create yourself an account.
3. Choose "Join a School" and enter the school handle (above).

Visit www.parenthub.co.uk to find out more

This term, we are launching our new school communication app for parents and carers, *Parent Hub*.

The app is designed to keep you more up to date with school life and connected to your children's learning.

Please see the poster below on how to download and log onto the app using your smart phone. Once launched, you will be able to access information about the school, your child's year group, their class and their learning. Teachers will also be able to communicate directly with you via the app. Coleridge Families (our PTA) will also be using the app to disseminate information about their events.

If you have not got a smart phone and do not wish to download the app, all school communication will default to your email address.

Other information

- Please ensure that your child has a water bottle in school.
- Children should not wear jewellery in school. If children have their ear pierced, they should wear studs only.
- If there are any changes to who is picking up your child, please let the class teacher know, especially if it is a new adult that we have not met before.
- Lost property – it is helpful if your child's clothes are labelled with their name so that clothing can be returned to them.
- Shoelaces – Please do not send your child into school wearing shoes with laces if they are not able to tie them themselves. If your child has shoes with laces but cannot tie them, please get elastic laces for them.
- There is a money collection envelope in each class where you can make a voluntary contribution for ingredients for playdough and cooking, and for arts and crafts materials (e.g. sequins, pipe cleaners, craft sticks, pompoms etc.). We are suggesting 50p/£1 per child each half term and would appreciate your support.
- **Problems or concerns:** Please speak to the class teacher or email the admin office at admin@coleridgeprimary.net to arrange a time when we can phone you to discuss any issues or concerns.