

Welcome to the
Year 4
Curriculum Chat

The Team...

The Year 4 team this year is:

4P – Zofia Stepniak

4R – Laura Bosworth and Kirstie Henry

4B – Bethan Risby

4R – Beth Whitley (Year Team Leader)

- Rachel Lambert (Mon-Weds)
- Dave Nice (Mon -Thurs AM only)
- Lucia Garrana (Tues-Fri)
- Jessie Hood / Louise Mattocks (Mon – Fri PM only).

Structure of the day

- Doors open 8.50 and close at 8:55.
- Pick up is at 3:25 but we stagger our release times slightly due to the over crowding. As year 4 pick-up is a very busy space, we ask Year 4 parents and carers to stand closer to the climbing frame to wait for the children. Year 4 classes will be dismissed in the following places:
MUGA 4O 4B 4P 4R steps
- If your child is absent due to illness, please let the office know **before 9am**. You can email (admin@coleridgeprimary.net), send a message on Parent Hub or leave a message on the school answering machine.

Week 1				
Monday	Tuesday	Wednesday	Thursday	Friday
Ms Whitley and Ms Stepniak	Ms Bosworth and Ms Risby	Ms Whitley and Ms Risby	Ms Henry and Ms Stepniak	Ms Whitley
Week 2				
Monday	Tuesday	Wednesday	Thursday	Friday
Ms Bosworth and Ms Risby	Ms Whitley and Ms Stepniak	Ms Bosworth and Ms Stepniak	Ms Whitley and Ms Risby	Ms Henry and Ms Stepniak

Structure of the day

- Mornings are usually maths, English and guided reading/spelling focused.
- **English** lessons will take place four times per week.
- We have nine **maths** lessons over the two weeks.
- During the afternoons, we teach wider curriculum subjects. Religion and Worldviews and D&T will be taught on one day every half term.
- **Wet play** – We will only ever do wet play if it is heavy rain. Children will still play outside in the rain and must have appropriate clothing for this.

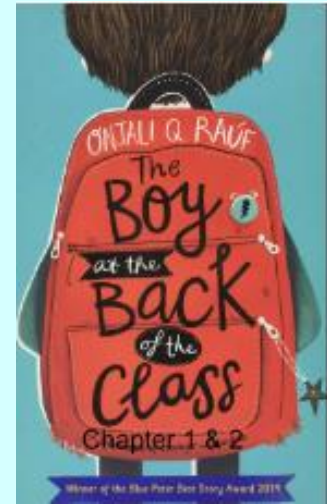
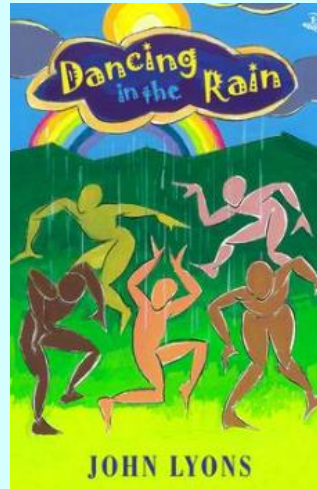
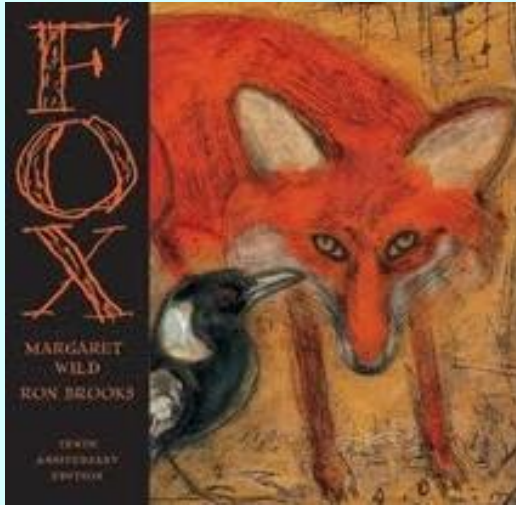
WEEK 1	Monday	Tuesday	Wednesday	Thursday	Friday
9.00am – 9.15am	MATHS	SPELLINGS (TEST)	MATHS	GUIDED READING	MATHS
9.15am – 9.30am					
9.30am – 9.45am		MATHS		MATHS	
9.45am – 10.00am					
10.00am – 10.15am					
10.15am – 10.30am					
10.30am – 11am	SINGING ASSEMBLY	BREAK TIME			
11.00am – 11.15pm	ENGLISH	ENGLISH	ENGLISH	ENGLISH	GEOGRAPHY
11.15am – 11.30am					
11.30am – 11.45am					
11.45am – 12.00pm					
12pm – 1pm					
1.00pm – 1.15pm	INDEPENDENT READING	HANDWRITING	INDEPENDENT READING	HANDWRITING	Independent reading
1.15pm – 1.30pm	PE	HISTORY	PE and COMPUTING (Mario and Jason)	SCIENCE	READING (library)
1.30pm – 1.45pm					
1.45pm – 2.00pm					
2.00pm – 2.15pm	PSHE	GUIDED READING		CLASS SINGING	GUIDED READING
2.15pm – 2.30pm					
2.30pm – 2.45pm					
2.45pm – 3.00pm	SLT ASSEMBLY	STORY TIME	STORY TIME	GOLDEN TIME	
3.00pm – 3.25pm					
3.25pm					

English and Maths



- Our focus in English and Maths can change from week to week. The best way to see what we are covering is to look at the **weekly overview** which is uploaded to Parent Hub on a Friday after school.

English



1 or 2 units of work per half term. These are a mixture of fiction, non-fiction and poetry. These have a book that the unit of work is planned around.

Activities include discussion work; making predictions and sharing ideas about what we have read or heard. We also have different drama opportunities, shared writing as a class and independent writing in books.

Maths Mastery

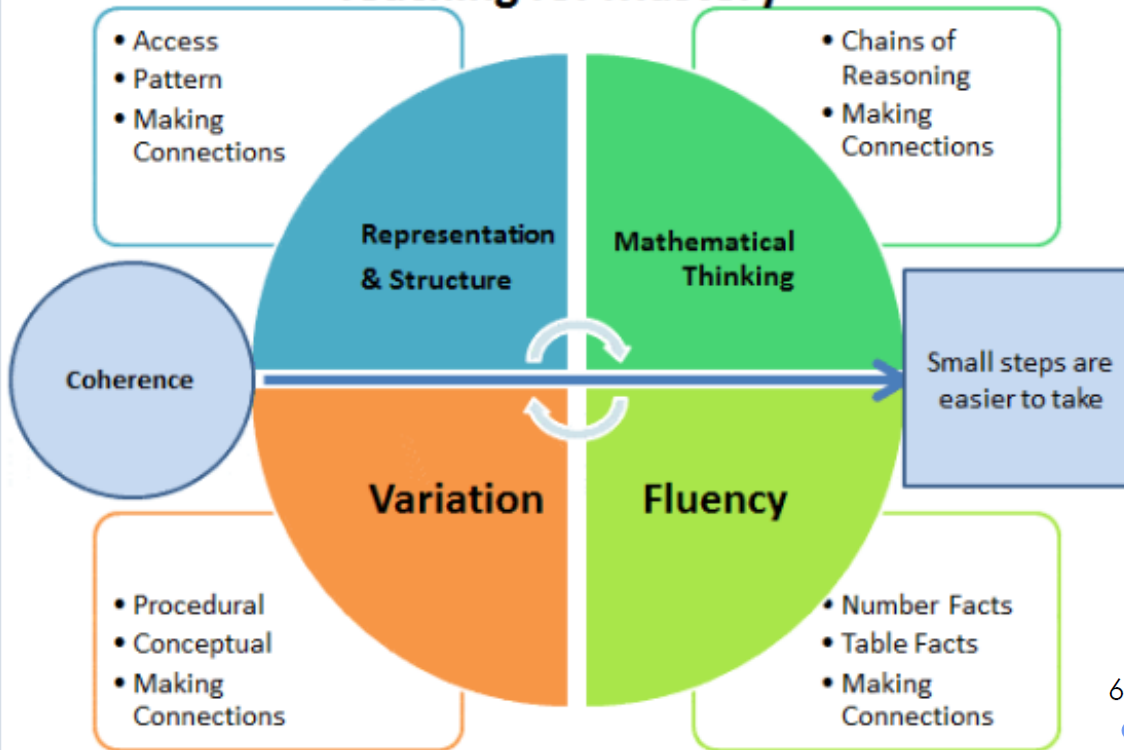
Missing digits

Fill in the missing digits.

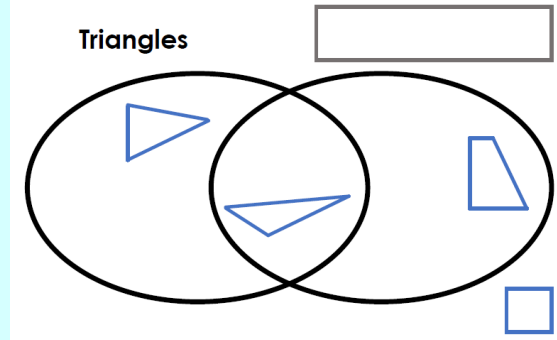
$$3\square + \square 6 = \square\square 6$$

Find different ways.

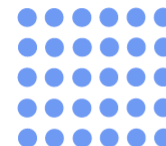
Teaching for Mastery



Write the missing heading for the Venn diagram.
Add shapes to each section.



6×5 is the same as:



$_ \times _ + _ \times _$

$_ \times _ + _ \times _$

$_ \times _ + _ \times _$

Curriculum Coverage

Our **history** topics this year are:

Roman Republic/Roman Empire

Roman Britain/Christianity in Three Empires

Ancient Arabia/Islamic Civilisations

Our **geography** topics are:

The Rhine /Populations

Coasts/Tourism

Earthquakes/Deserts

Our **science** topics this year are:

States of matter, Animals including humans,

Sound, All living Things, Electricity.

Our **religion and world views** topics this year are:

The life of Jesus Christ, What we can learn about Christianity, How should we live our lives.

Times Tables

In Year 4, we have a Multiplication Tables Check which will take place in June.

- Children will be given a times table to learn each week. They will learn this times table: in order, not in order, with division over a three week period.
- Children are expected to learn the corresponding division fact, e.g. $7 \times 3 = 21$, therefore $21 \div 3 = 7$.
- Times tables tests will take place every Friday in class.
- We will also be practising times tables during maths lessons but we recommend weekly use of TTRockstars at home.

TT Rockstars



JAMMING

Take it easy



GIG

Perform once a month



GARAGE

Complete your heatmap



STUDIO

Get a rock status



SOUNDCHECK

Beat the clock

FS

Reading



We have three whole class story sessions each week and each **guided reading group** is read with once every 2 weeks. We also have whole class reading sessions once a week.

Children are given lots of opportunities to **read independently** and in class. Some children read 1:1 with an adult to develop word recognition.

Children can bring in their own reading books for independent reading or choose one from the library or book corner. We may send some children home with a book selected with their reading level in mind.

We want to really stress the importance of each child reading every day at home. This will help your child progress with their reading fluency as well as help to develop their inference and language. Frequent practice at home (ideally daily) will have a pronounced effect on their progress.

Spelling

- There will be two spelling lists sent home to all children. Group 1 spellings are recap words from the next 200 high-frequency words list. Group 2 spellings are statutory Year 4 spellings. Children can decide with their teacher or parents, which list to focus on.
- We have 2 spelling sessions a week. One of those sessions will be for teaching a KS2 spelling rule e.g. words with an 'igh' sound and one of these will be for the test (Tuesday).
- If your child has gaps in their spelling knowledge, they will be tested on key words/rules from previous years until they are secure.
- Children will need to bring their yellow spelling book to school every **Tuesday** and spellings will also be posted on Parent Hub on Tuesdays.

Assessment

- We assess the children's ability in every lesson and make notes on how they manage an activity and whether or not they have met the learning objective.
- These notes then feed into an individual assessment profile which is completed and updated every term.
- Throughout the year, teachers will complete the profile and will be able to inform you of any areas that your child may need to practise. Your child's class teacher will then keep you updated on their progress.
- You will be informed as to your child's achievement and progress - relative to national expectation - at the end of each year.

Attendance

Daily attendance at school is vital for your child to achieve their full potential.

Missed days of school, and lateness, can really add up over the course of year and negatively impact your child's learning.

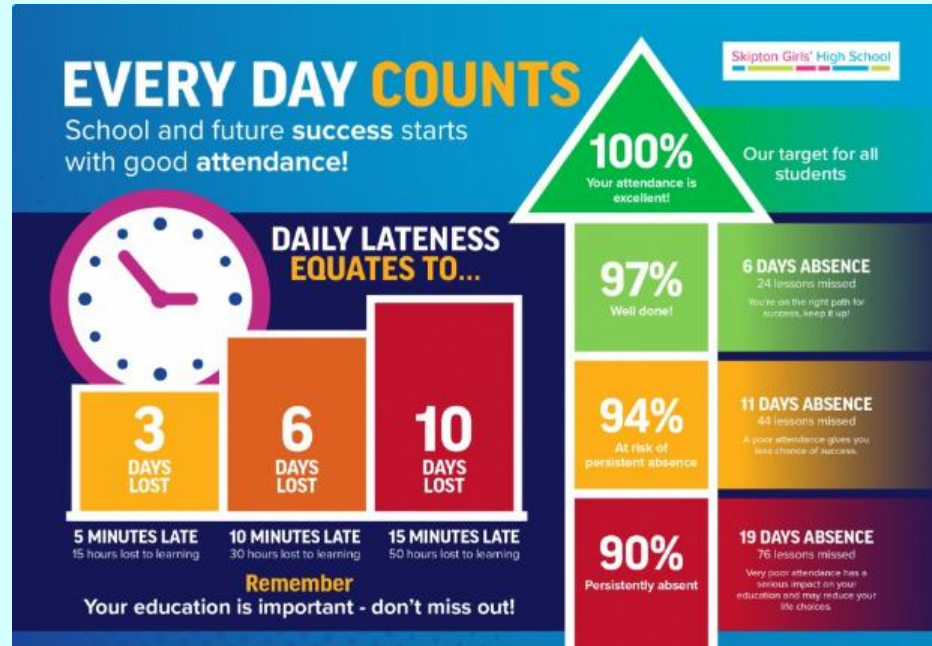
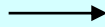
Coming in even a few minutes late can be very unsettling for a child, and means they might miss the start of a lesson.

Permission for absence will only be granted for:

- Illness
- Medical appointments
- Religious holidays
- Exceptional circumstances

Children can still attend school with minor coughs & colds.

The **NHS** have a website page called 'Is my child too ill for school' which outlines if you should send your child to school or not.



Attendance

Nationally, there is an 'attendance crisis' in schools. School attendance is significantly lower than pre-pandemic levels.

There is a major drive from the Government to tackle poor attendance. This includes new attendance guidelines for all schools.

If the school are concerned about your child's level of attendance, a member of the school **Senior Leadership Team** will contact you to talk about this and work with you to try and improve your child's attendance.

"School absence is at crisis levels, wreaking havoc on children's education and future life chances. Persistent absence remains eye-wateringly high, up 60 per cent on pre-pandemic levels, with one in five children persistently absent. 29 Feb 2024

 The Centre for Social Justice
<https://www.centreforsocialjustice.org.uk/> · CSJ

Call for Immediate Action on School Absence Crisis

 The Guardian

Ofsted reforms to focus on inclusion, behaviour and attendance

Far-reaching reforms aim to support most vulnerable children and 'recognise growing challenges facing education'



 GOV.UK

Major national drive to improve school attendance

Attendance hubs to more than double to support 1000 more schools and £15 million investment to expand the attendance mentor pilot programme.

8 Jan 2024



Communication

ParentHub



We really encourage all parents to get the **ParentHub** App. This is the school's main method of communication. Having the App is the best way of knowing what is going on in your child's year group.

Parent WhatsApp groups

The school does not wish to try and micromanage parent discussions outside the gates, but please can we ask you to approach the school if you have any issues or concerns rather than taking to WhatsApp to discuss them with other parents in an open forum. Unfortunately, we have found that these sorts of discussions can sometimes lead to misinformation and exacerbates issues rather than improve them for those concerned.

Please talk to school staff in the first instance if you have any concerns about your child



Social upsets



Learning at home

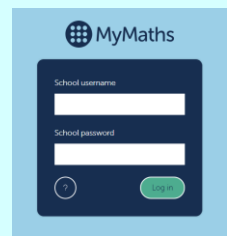
Compulsory

- **Reading** – regularly hearing your child read at home (for a minimum of 10 minutes every day).
- **Spellings** – helping your child learn the weekly spellings that are sent home by the school.
- **Times tables** – practise the times table for each week for 10 minutes 2 or 3 times a week

List 1	w/b 13.11.23
Spellings - adverbs	
1.	happily
2.	angrily
3.	lazily
4.	easily
5.	bustily
6.	greedily
7.	messily
8.	wearily
9.	cheekily
10.	clumsily

Optional

- Each half term, **Home Learning** is posted on the school website and on ParentHub.
- Although Home Learning is **optional**, we strongly encourage your child to complete some of the activities to reinforce the message that learning isn't just confined to the classroom.
- There are Home Learning documents for Maths, English & Wider Curriculum subjects.
- There is a wide range of activities – some are creative whereas others practise skills learnt in class.
- Maths activities are posted on **MyMaths**. You should have login details already.



*If you would like to know why some of our learning at home is optional, there is a **rationale** on our website, in the Home Learning section.*

Problems or concerns

We are always open to meeting parents to discuss any issues you have. Please arrange a time with your class teacher.

From 8:45 through to 3:25 our focus is the children and managing the learning environment. We are unable to discuss matters in these times which are not urgent or integral to your child's day. Conversations about general attainment or social issues are best had at an appointed time.

Contact admin@coleridgeprimary.net if you have any questions or concerns.

Thank you!