

**YEAR 6
CURRICULUM
CHAT**

The Year 6 team

Natalie Thorn (Year Team Leader) – 6P

George Southey – 6O

Jemma Driver – 6R

Jon Goddard- 6B

Supporting our children will be: Jo Hewitt, Jo Bewick and Bryce Martin. Louise Mattocks also works with us on a Tuesday.

The Wider Curriculum

Our topics this year are:

History

- The Maya
- African Kingdoms
- London through Time
- World War II

Geography

- Energy and Climate Change
- Ethiopia
- Changing UK
- Jamaica
- Comparing three regions
- Maps and Fieldwork

Science

- Animals including humans
- Light
- Electricity
- Evolution and Inheritance
- Living things and their habitats

Religions and world views

- How people express their beliefs
- What people believe about life
 - *Different religions (Islam; Christianity; Buddhism) will be used to explore the above topics.*

MATHS AND ENGLISH

- *Our focus in maths and English can change from week to week. The best way to keep up with our learning goals for each week and support learning at home is to look at the weekly overview.*
- *This can be found on Parent Hub and is updated each week. If you have questions regarding the overview or how to support your child's learning, you are welcome to arrange a time to meet with us.*
- *Children are in different groups for maths and English according to their current learning needs. There are 4 groups for writing and 5 groups for maths, which each of the Year 6 teachers will take along with Mr Ibbotson. We will review groupings periodically to ensure that children are working at the right level for their learning needs.*

Coleridge Primary School

would like you to join their school on Parent Hub.

Just tap "Join a School" in the app and enter the handle below...

@ColeridgeN8

The Parent Hub app is FREE to download and use.

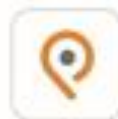


What is Parent Hub?



Parent Hub is a FREE app that helps keep you up to date with what's going on at school. You'll receive messages, pictures, documents and newsletters, all in one handy place.

Instructions for Parents



1. Download the Parent Hub app from your app store (iPhone or Android).
2. Create yourself an account.
3. Choose "Join a School" and enter the school handle (above).

Visit www.parenthub.co.uk to find out more

This term, we are launching our new school communication app for parents and carers, *Parent Hub*.

The app is designed to keep you more up to date with school life and connected to your children's learning.

Please see the poster below on how to download and log onto the app using your smart phone. Once launched, you will be able to access information about the school, your child's year group, their class and their learning. Teachers will also be able to communicate directly with you via the app. Coleridge Families (our PTA) will also be using the app to disseminate information about their events.

If you have not got a smart phone and do not wish to download the app, all school communication will default to your email address.

OUR STYLES OF LEARNING AND RECORDING

- *We favour an approach to learning which offers children a broad range of learning opportunities.*
- *Children will work in a range of group sizes and independently (where appropriate) throughout the year.*
- *We believe in discussion and enquiry as fundamental learning tools. Children learn when they are active participants in their own education and are able to share their ideas and discoveries with each other.*
- *Children will record in exercise books, laptops, posters, sugar paper, whiteboards and books they make themselves. Their work in their text books will be assessed and commented on by teachers.*

OUR EXPECTATIONS

- *In May, the children will sit a series of standardised assessments.*
- *The children will be tested in mathematics reasoning and arithmetic, reading comprehension, spelling and grammar.*
- *These SATs will be marked externally and the results will be reported to us all in late June/ early July.*



OUR EXPECTATIONS

- For maths, reading and spelling and grammar children will be given a scaled score from 80 – 120 according to how they do in the SATs tests.
- In each of these assessments, the expected score for a Year 6 child will be 100.
- A child scoring 110 or more is considered to be working at ‘greater depth’.



BOOSTER GROUPS AND SUPPORT

- *Throughout the year, we will be identifying ways to support children's learning outside of their regular scheduled lessons but still during the school day. You will be informed if your child is going to take part in these.*
- *In the final months before SATs we will be scheduling booster groups to run before or after school to support areas of children's learning that will benefit them when they are assessed in May, but also to aid their preparation for secondary school.*



MARKING

Children receive different types of feedback on their learning. Sometimes this will be verbal, at times they will edit their own work, or that of a peers, and at other times this will be a written comment from their teacher. To make the marking process more meaningful for children, they will often have self-assessment boxes to fill in. These will usually come for longer pieces or at the end of a unit of work. The teacher will then complete these too when marking pieces of work.

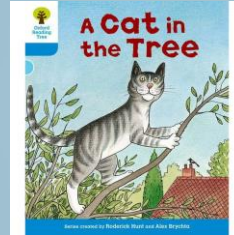
Positive comments will also be made to highlight what they have done well, and where appropriate, 'challenges' or tasks will be set for them to complete in lesson.

Feature to include	I checked myself	Teacher Checked
Use 4 different verbs for speech.		
After speech include detail about a character's movement.		
Use at least one instance of reported speech.		

Learning at home

Compulsory

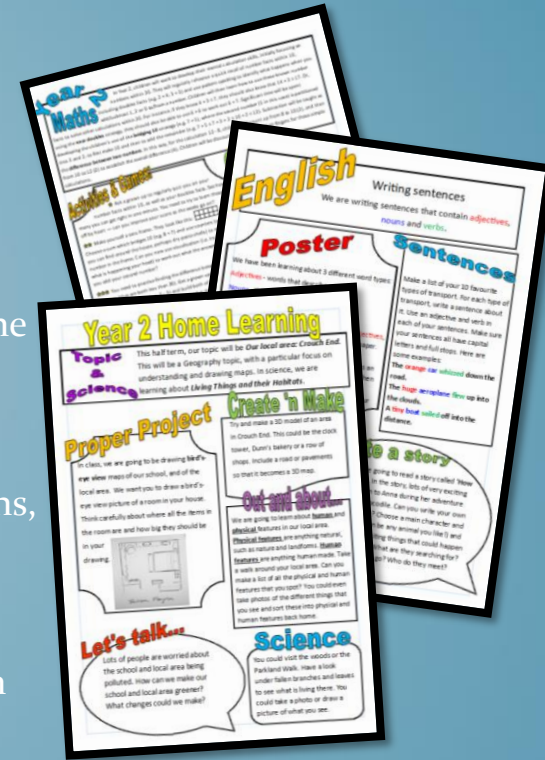
- **Reading** – regularly hearing your child read at home (for a minimum of 10 minutes every day).
- **Spellings** – helping your child learn the weekly spellings that are sent home by the school.



List 1	w/b 13.11.23
Spellings - adverbs	
1.	happily
2.	angrily
3.	lazily
4.	easily
5.	busily
6.	greedily
7.	messily
8.	wearily
9.	cheekily
10.	clumsily

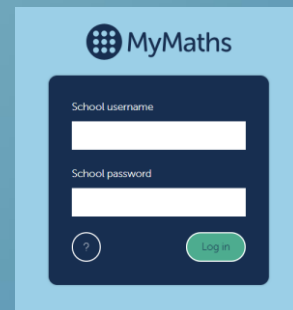
Optional

- Each half term, Home Learning is posted on the school website and on ParentHub.
- Although Home Learning is **optional**, we strongly encourage your child to complete some of the activities to reinforce the message that learning isn't just confined to the classroom.
- There are Home Learning documents for Maths, English & Wider Curriculum subjects.
- There is a wide range of activities – some are creative whereas others practise skills learnt in class.
- Maths activities are posted on **MyMaths**. You should have login details already.



our

*If you would like to know why some of learning at home is optional, there is a **rationale** on our website, in the Home Learning section.*



Behaviour

There are 5 core values which underpin our behaviour policy. We will teach, provide meaningful opportunities for and expect our children to be:

- *Creative*
- *Caring*
- *Resilient*
- *Aspirational*
- *Inclusive*



Behaviour

Rewards

- Golden book

Sanctions

Sanctions for unacceptable behaviour will be set according to this chart which is on the website and in every classroom.



Coleridge Primary School

Learnors for life

CREATIVE, CARING, RESILIENT

KS2 Behaviour Consequence Sheet

Stage	Unacceptable Behaviours	Consequence
1	<ul style="list-style-type: none"> Calling or shouting out Swearing on chairs Shouting inside, both in classroom and in the corridor Not following simple instructions Continuing to talk after countdown Consistently interrupting others while they are talking Not joining in an activity during learning time Not tidying up Running in the hall Talking in assembly Being inside without permission at playtime 	<p>Deal with by class teacher or teaching assistant</p> <p>Child to receive a reminder.</p> <p>If children are caught running inside they will be asked to go back and walk.</p>
2	<p>Persistent Stage 1 behaviours</p> <ul style="list-style-type: none"> Answering back or arguing with an adult Running or walking away from a teacher Disrupting the learning of others Throwing things in the classroom Leaving the room without permission Refusing to follow instructions Being deliberately unkind to others Cheating or disrupting other children's playground games Swearing 	<p>Deal with by Year Group Leader</p> <p>After 3 reminders in one session (morning or afternoon), the child will miss 10 minutes of their timetable, and will be spoken to by the Year Group Leader.</p> <p>If being disruptive in the classroom, the child will be asked to spend 30 minutes in another room, supervised by an adult.</p> <p>If caught cheating 3 times outside in a game, child to receive one week ban from participation in playground games.</p> <p>Teachers or TA on duty need to report to child's class teacher.</p>
3	<p>Persistent Stage 2 behaviour</p> <ul style="list-style-type: none"> Persistent swearing Intentionally damaging school resources or other people's property Stealing Fighting Physical aggression and/or retaliation Persistent refusal to participate Challenging an adult (e.g. persistently answering back or arguing) Being abusive or threatening to others Inappropriate comments made to children or staff 	<p>Deal with by Senior Leadership Team</p> <p>Child sent to see member of the SLT</p> <p>Child spends 30 minutes of their lunch break in the reflection room.</p> <p>Teacher informs parents of incidents via phone conversation.</p> <p>Details will be reported to all SLT and Year Group Leader in brief e-mail and logged on MyConcern.</p>
4	<p>Persistent Stage 3 behaviour</p> <ul style="list-style-type: none"> Discriminatory remarks about the race, culture, religion/gender or sexuality of others Verbal abuse and/or physical aggression towards an adult Leaving school without permission Bullying others (this is persistently targeting another child either physically or emotionally, and on more than one occasion) Serious physical aggression Serious violence resulting in physical injury Threatening an adult Inappropriate sexualised comments or behaviour towards others 	<p>Deal with by Senior Leadership Team</p> <p>Internal exclusion – either a morning or afternoon out of class, learning in isolation whilst supervised by a member of the SLT (work to be set by the class teacher)</p> <p>SLT either call home or arrange meeting with parents.</p>
	<p>A serious breach, or persistent breaches, of the school's behaviour policy, or where a child's behaviour means allowing them to remain in school would be detrimental to the education or welfare of the pupil or others in the school.</p>	<p>Deal with by the Headteacher</p> <p>Suspension or Permanent Exclusion</p>

THE PLAY

- Preparations have already begun on the play for this year! The Year 6 teachers are busy scheduling and writing the play ready for the pre-Christmas performance.
- We will be keeping details under our hats until Friday when we will begin working with the children on auditions and rehearsals.
- As always, there will be lots of ways for children to be involved in the play.
- We will also be looking for parent volunteers to help with organisation, costumes, acting and more! A letter will go out shortly on Parent Hub with details.



SCHOOL JOURNEY

- We will be taking 2024-25 Year 6 group on a residential activity course to Grosvenor Hall in Ashford, Kent from Monday 23 to Friday 27 June 2025.
- Trips like these are an invaluable as part of the National Curriculum and the beneficial effects on a child's progress that such courses provide. They offer new and exciting challenges and by living with their peers and working together in a team environment, help develop independence, confidence and an ability to recognise strengths and weaknesses in a constructive way. It is also a fun trip celebrating the near end of their journey at Coleridge with their classmates and teachers.
- The activities available include: 3G Swings, a zipwire, crate stacks, Jacob's ladder, climbing walls, abseiling walls, a range of bush craft activities, archery, laser tag, obstacle challenge...and the list goes on!



SCHOOL JOURNEY

- You will have already received information about this trip, including information about costs, the deposit due date and other key dates.
- The total cost of the visit, per child to Grosvenor Hall is £540.00 and includes, full board accommodation (bedding provided), all instruction and activities, safety equipment, transport and insurance. You can make a payment via Arbor, our school's online payment system.
- If you would like your child to go on this trip but are unable to afford or unable to meet this payment schedule, please make an appointment with Headteacher, Leon Choueke or Amy Gold (East Office Administrator) to discuss one that is affordable for you. All meetings will of course be held confidentially.
- In order to secure our booking, we are asking for a **non-refundable deposit** of **£100** per child by Wednesday 25 September 2024. We have set up a payment schedule to ensure that we receive the required funds in time to make the final payment to Grosvenor House. **Please note that we will not be able to proceed with this trip if we do not receive sufficient funds to meet the cost.**
- We also welcome donations from those who would like to help fund the trip anonymously for their classmates. You may also pay ahead of the above payment schedule, or pay the trip cost upfront in full.



Attendance

Daily attendance at school is vital for your child to achieve their full potential.

Missed days of school, and lateness, can really add up over the course of year and negatively impact your child's learning. →

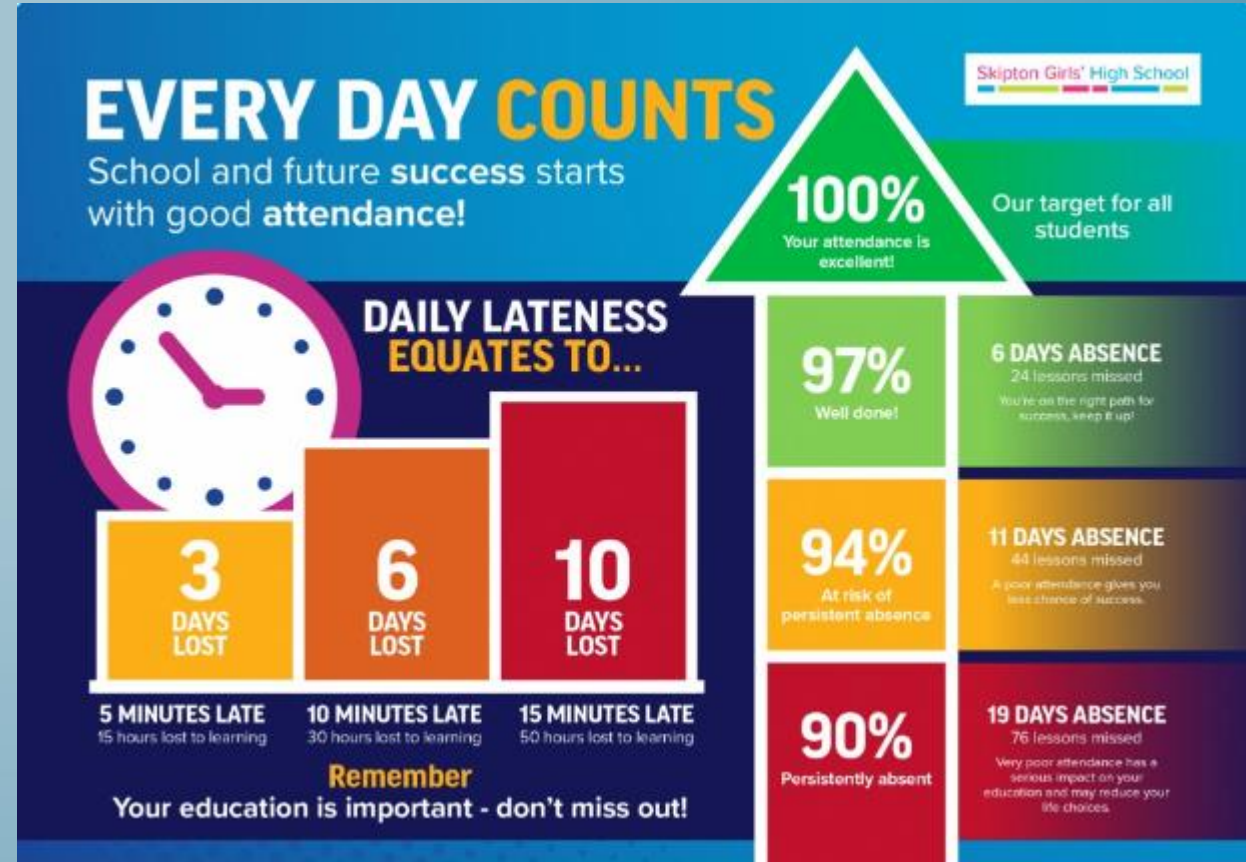
Coming in even a few minutes late can be very unsettling for a child, and means they might miss the start of a lesson.

Permission for absence will only be granted for:

- Illness
- Medical appointments
- Religious holidays
- Exceptional circumstances

Children can still attend school with minor coughs & colds.

The NHS have a website page called 'Is my child too ill for school' which outlines if you should send your child to school or not.



Attendance

Nationally, there is an 'attendance crisis' in schools. School attendance is significantly lower than pre-pandemic levels.

There is a major drive from the Government to tackle poor attendance. This includes new attendance guidelines for all schools.

If the school are concerned about your child's level of attendance, a member of the school **Senior Leadership Team** will contact you to talk about this and work with you to try and improve your child's attendance.

"School absence is at crisis levels, wreaking havoc on children's education and future life chances. Persistent absence remains eye-wateringly high, up 60 per cent on pre-pandemic levels, with one in five children persistently absent." 29 Feb 2024

 The Centre for Social Justice
<https://www.centreforsocialjustice.org.uk> CSJ


Call for Immediate Action on School Absence Crisis

 The Guardian

Ofsted reforms to focus on inclusion, behaviour and attendance

Far-reaching reforms aim to support most vulnerable children and 'recognise growing challenges facing education'



 GOV.UK

Major national drive to improve school attendance

Attendance hubs to more than double to support 1000 more schools and £15 million investment to expand the attendance mentor pilot programme.

8 Jan 2024



Other information

- **Snacks**
- **PE clothing**
- **Water**
- **Walking home**

Haringey Admissions are coming in to talk to Yr 6 Parents about the secondary transfer process on **Monday 7th October at 7pm-** West Hall.

Communication

ParentHub



We really encourage all parents to get the **ParentHub** App. This is the school's main method of communication. Having the App is the best way of knowing what is going on in your child's year group.

Parent WhatsApp groups

The school does not wish to try and micromanage parent discussions outside the gates, but please can we ask you to approach the school if you have any issues or concerns rather than taking to WhatsApp to discuss them with other parents in an open forum. Unfortunately, we have found that these sorts of discussions can sometimes lead to misinformation and exacerbates issues rather than improve them for those concerned.

Please talk to school staff in the first instance if you have any concerns about your child



Online activity

In school

- At this age, more and more children are spending time online and have more open access to smart technology.
- The school teaches an e-safety curriculum, gives regular assemblies on staying safe online, and has monitoring and filtering systems for when children are online in the school.
- If you'd like to know more about how we teach **Online Safety** at Coleridge, there's a video and blog on our school website.

At home

- Although the school teaches **Online safety**, it is imperative that you monitor your child's online activity at home. This is to ensure they stay safe, but also that they themselves act appropriately towards others.
- Almost all social media platforms, including WhatsApp, have a minimum age limit of 13 years old. The NSPCC website has age limits and guidance on social media usage and child safety.
- Although the use of phones & social media takes place beyond the school gates, the school does have an obligation to intervene in certain situations, particularly where there are safeguarding concerns. Last year we had a very serious incident stemming from a group of children accessing a social media platform unsupervised, that demanded we contact outside agencies like social services and the police.

Haringey
Admissions to
come in and talk
to Yr 6 Parents
about the
secondary
transfer process
on **Monday 7th**
October at 7pm-
West Hall.

Thank you for coming!

We look forward to a brilliant year!

Any Questions?